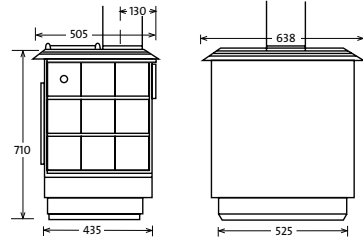


# Dimensions and specifications for freestanding woodfires for properties under 2 hectares

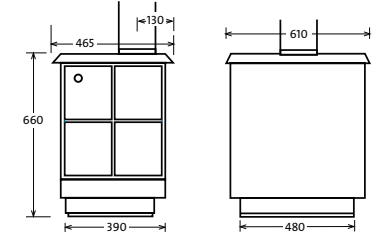
## Contessa Urban

HEATING AREA	200sqm*
FLUE SIZE	150mm
FIREBOX SIZE HEIGHT	340mm
WIDTH	460mm
DEPTH	370mm



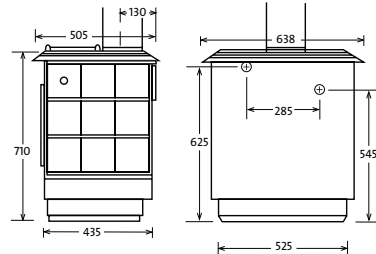
## Bronte Top Outlet AG

HEATING AREA	150sqm*
FLUE SIZE	150mm
FIREBOX SIZE HEIGHT	330mm
WIDTH	410mm
DEPTH	300mm



## Contessa AG

HEATING AREA	200sqm*
HOT WATER OUTPUT	1.2kw
HOT WATER TAPINGS	1" BSP
FLUE SIZE	150mm
FIREBOX SIZE HEIGHT	340mm
WIDTH	460mm
DEPTH	370mm

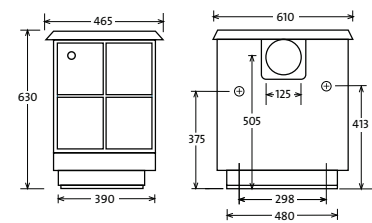


## Bronte Rear Outlet AG

HEATING AREA	150sqm*
HOT WATER OUTPUT	3kw
HOT WATER TAPINGS	1" BSP
FLUE SIZE	150mm
FIREBOX SIZE HEIGHT	330mm
WIDTH	410mm
DEPTH WITH WETBACK	300mm

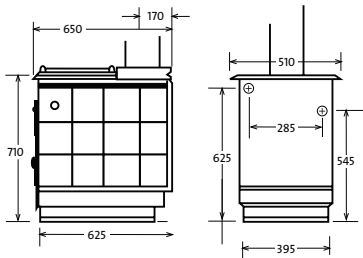


LOWER PEDESTAL STANDARD



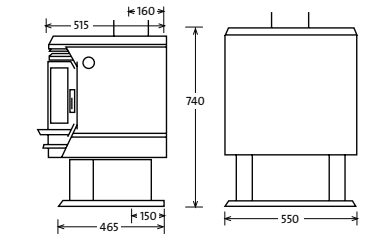
## Lady Kitchener Urban + AG

HEATING AREA	200sqm*
HOT WATER OUTPUT	3kw
HOT WATER TAPINGS	1" BSP
FLUE SIZE	150mm
FIREBOX SIZE HEIGHT	340mm
WIDTH	320mm
DEPTH	500mm



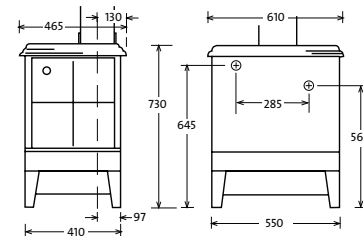
## Dante Urban

HEATING AREA	150sqm*
FLUE SIZE	150mm
FIREBOX SIZE HEIGHT	330mm
WIDTH	410mm
DEPTH	400mm



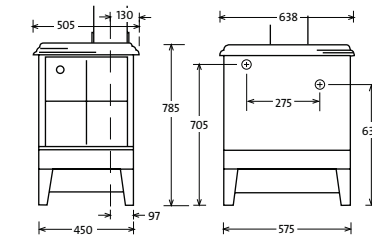
## Zealandia Multi Fuel

HEATING AREA	200sqm*	
HOT WATER OUTPUT	5kw or 3kw	
HOT WATER TAPINGS	1" BSP	
FLUE SIZE	150mm	
FIREBOX SIZE	COAL	WOOD
HEIGHT	260mm	320mm
WIDTH	400mm	400mm
DEPTH	240mm	300mm



## Coaster Multi Fuel

HEATING AREA	200sqm*	
HOT WATER OUTPUT	5kw or 3kw	
HOT WATER TAPINGS	1" BSP	
FLUE SIZE	150mm	
FIREBOX SIZE	COAL	WOOD
HEIGHT	320mm	350mm
WIDTH	460mm	460mm
DEPTH	320mm	380mm



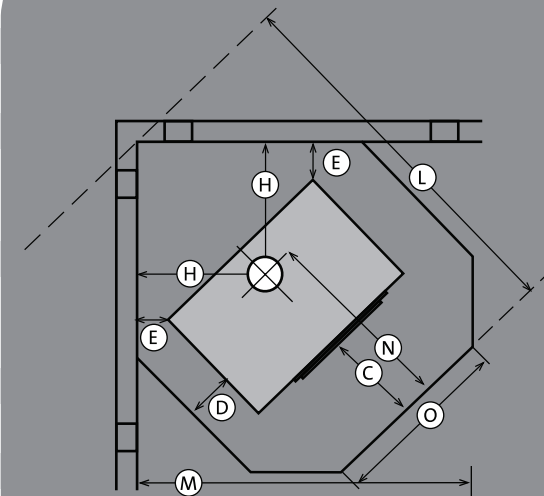
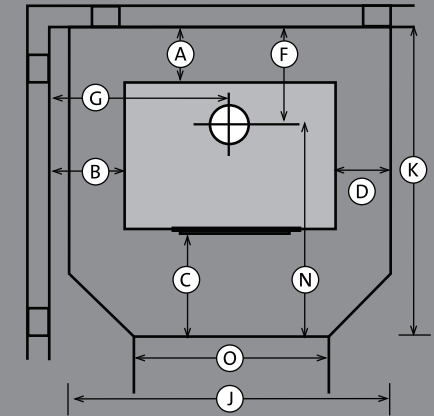
Measurements shown are for units on a Pedestal or Drawer base, except the Zealandia and Coaster. For the Lady Kitchener, Contessa and Bronte Top Outlet on legs add 70mm to vertical heights given. For Bronte Rear Outlet add 95mm to vertical height given.  
 \*200sqm = 3 to 4 bedroom home, 150sqm = 2 to 3 bedroom home (estimated for a fully insulated house with 2.4m high stud, situated in average climate conditions).

# Installation clearances for freestanding woodfires in urban areas

ALL CLEARANCES ARE WITH FLUE PIPE SHIELD

	A	B	C	D	E	F	G	H	J	K	L	M	N	O	FLOOR PROTECTOR NOTE NUMBER	WATER HEATING OPTIONAL EXTRA
<b>BRONTE TOP OUTLET AG</b>																
PEDESTAL & DRAWER BASE	100	250	435	100	50	230	555	355	810	1000	1295	1170	770	630	2	
LEG BASE	100	250	300	100	50	230	555	355	810	865	1210	1080	635	630	2	
<b>BRONTE REAR OUTLET AG</b>	▶ INTO CHIMNEY CAVITY - CAN ONLY BE INSTALLED WITH WET BACK															
PEDESTAL & DRAWER BASE	100	245	470	100	N/A	N/A	550	N/A	810	1035	N/A	N/A	N/A	630	2	3 kW WETBACK
LEG BASE	100	245	405	100	N/A	N/A	550	N/A	810	970	N/A	N/A	N/A	630	2	
<b>BRONTE REAR OUTLET AG</b>	▶ EXPOSED FLUE: CAN ONLY BE INSTALLED WITH WET BACK															
PEDESTAL & DRAWER BASE	360	245	470	100	110	240	550	240	810	1295	1400	1210	N/A	630	2	3 kW WETBACK
LEG BASE	360	245	405	100	110	240	550	240	810	1230	1335	1165	N/A	630	2	
<b>CONTESSA AG</b>	▶ FOR CHRISTCHURCH AREA ONLY															
PEDESTAL & DRAWER BASE	100	350	465	110	50	230	670	375	860	1040	1330	1150	810	600	2	1.2 kW WATER BOOSTER
LEG BASE	100	350	400	110	50	230	670	375	860	965	1255	1105	735	600	2	
<b>CONTESSA URBAN</b>																
PEDESTAL & DRAWER BASE	100	275	410	110	100	230	595	420	860	1015	1380	1195	785	600	2	
LEG BASE	100	275	300	110	100	230	595	420	860	905	1270	1095	675	600	3	
<b>DANTE URBAN</b>																
ASH FLOOR PROTECTOR	100	300	270	150	100	260	575	455	850	885	1200	1120	625	500	3	
<b>LADY KITCHENER AG</b>	▶ FOR CHRISTCHURCH AREA ONLY															
PEDESTAL & DRAWER BASE	100	385	470	100	150	270	640	450	710	1220	1590	1340	950	540	2	3 kW WETBACK
LEG BASE	100	385	300	100	150	270	640	450	710	1050	1420	1210	780	540	2	
<b>LADY KITCHENER URBAN</b>																
PEDESTAL & DRAWER BASE	100	240	300	100	95	270	495	395	710	1050	1365	1145	780	540	2	3 kW WETBACK
LEG BASE	100	240	300	100	95	270	495	395	710	1050	1365	1145	780	540	3	
<b>COASTER MULTI FUEL</b>																
LEG BASE	100	275	300	110	100	230	595	420	860	905	1270	1095	675	600	3	5 OR 3 kW WETBACK
<b>ZEALANDIA MULTI FUEL</b>																
LEG BASE	150	350	380	100	130	280	655	430	810	995	1315	1120	715	530	3	5 OR 3 kW WETBACK

Clearances are in accordance with the requirements of AS/NZS 2918:2001



**NOTES:** 1 > Refer to owners manual for complete installation instructions and ensure compliance with building codes and regulations.

2 > Fires with a '2' require an insulated floor protector to the requirements of AS/NZS 2918:2001. Measurements shown are for a 40mm insulated floor protector, except the Contessa AG, which is 55mm.

3 > Fires noted '3' require an ash floor protector to AS/NZS 2918:2001.

4 > To gain more efficiency, we recommend installing an 'Energy Saver' flue system that reduces heat loss by up to 40%, acts as a fire stop and reduces wind and traffic noise.

5 > Not all fires are available in some areas. Please refer to your local dealer.